

RELIANCE INDUSTRIES

PROJECT OVERVIEW

OLYMPIC CANYON



Vessel and ROV services for Reliance Industries assisting in the development and long term maintenance of Block KG-DWN-98/3j

Olympic Canon is on a long term (5 year) Contract with Reliance Industries. Vessel performs a number of subsea tasks from Christmas tree installations, jumper and flying lead installations, general surveys and IRM activities.

PROJECT OVERVIEW

LOCATION

Block KG-DWN-98/3 in the Krishna Godavari basin, Bay of Bengal in water depths of between 400—2,700 metres.

PROJECT DATE/DURATION

- Mobilisation : Aberdeen Scotland in March 08
- Offshore Campaign : April 08 to April 2013
-

ASSETS

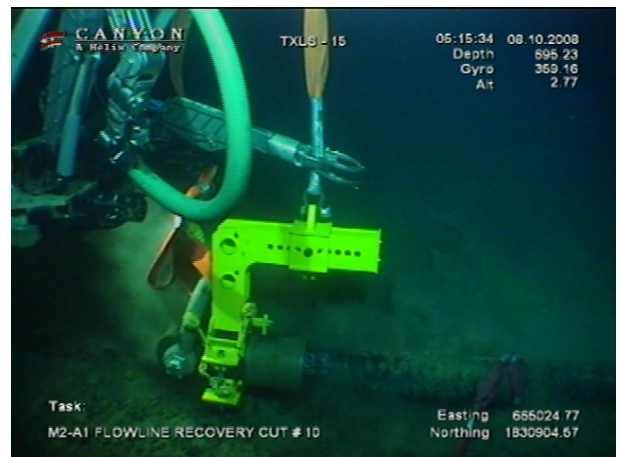
Olympic Canyon
Workclass ROVs. XLS 14 and 15

TOOLING

- Torque tools
- Flying lead tools
- IHPU'S
- Various survey sensors
- Visual soft package
- Pipeline cutting and recovery tools

SCOPE OF WORK

- Aker horizontal tree installations using AHC crane
- Pig launching and recovery
- Pipeline commissioning
- Baseline inspection including GVI and CP
- Small manifold installation
- General assistance to other vessels
- Pipeline cutting and recovery



SERVICES PROVIDED

- Vessel
- ROV systems
- Project Management
- Offshore management
- ROV teams
- Survey teams
- Welders
- Riggers
- Deck Foreman's

